

VALVE SETTERS

FS, MJFS, MJS



Job Name:	
Job Location:	
Engineer:	
Contractor:	
Tag:	
PO#:	
Rep:	
Wholesale Dist.:	

Apollo® 4AN Setters are specifically designed to match the mounting dimensions of the 4AN products. The three-piece configuration simplifies installation and eliminates the need for thrust blocks between the elbows. All hardware is stainless steel and the entire unit is FDA Epoxy coated inside and out. The mechanical joint connections are to AWWA C153 and the flanges are to ANSI B16.1 Class 125.

The Apollo® 4AN Valve Setter is shown in a typical installation. It is shipped in three separate pieces along with four nuts and four bolts (for Center Brace). Mechanical Joint accessories such as those shown are for reference only and are not included with the 4AN Valve Setter.

PERFORMANCE RATING

- Maximum Working Pressure: 175 psi
- Temperature Range: 33°F - 140°F, 180°F intermittent

APPROVALS

- AWWA C153
- ANSI B16.1 Class 125

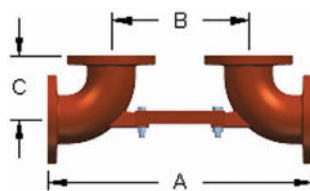
STANDARD MATERIALS LIST

SETTER BODY	Ductile Iron (ASTM A536)
SETTER CENTER BRACE	Hot Rolled Steel (ASTM A36)
SETTER BOLTS/NUTS	Stainless Steel
COATING	Fusion-Bonded FDA Grade Epoxy Internal & External

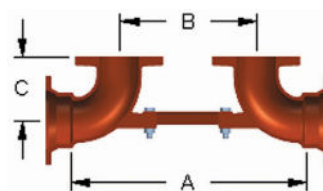
Contact local water authorities for installation/service requirements.

DIMENSIONS

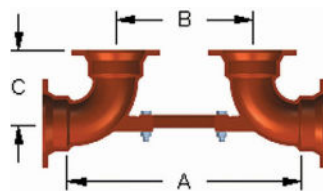
SIZE	MODEL	DIMENSIONS (IN.)			WT./EA (LB.)
		A	B	C	
2-1/2"	F	23-1/2	12-1/2	5-1/2	43.7
3"	F	23-1/2	12-1/2	5-1/2	50.4
	MJF	21-1/2	12-1/2	5-1/2	50.4
	MJ	21-1/2	12-1/2	7	50.7
4"	F	27	14	6-1/2	87.1
	MJF	24	14	6-1/2	71.1
	MJ	24	14	7-1/2	65.1
6"	F	32	16	8	147.5
	MJF	29	16	8	115.3
	MJ	29	16	9	107.1
8"	F	36-1/2	18-1/2	9	236.30
	MJF	33-1/2	18-1/2	9	216.40
	MJ	33-1/2	18-1/2	10	193.20
10"	F	43.0	21	11.0	388
12"	F	50-3/4	26-3/4	12	547



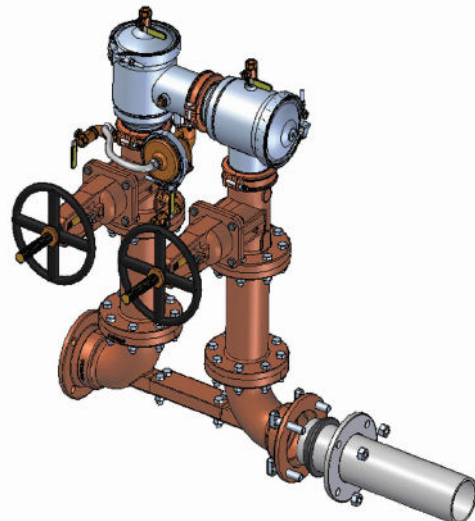
FLANGE X FLANGE (F)



MECHANICAL JOINT X FLANGE (MJF)



MECHANICAL JOINT X MECHANICAL JOINT (MJ)



The "Apollo" 4AN Valve Setter is shown in a typical installation. It is shipped in three separate pieces along with four nuts and four bolts (for center brace). Mechanical Joint accessories such as those shown are for reference only and are not included with the 4AN Valve Setter.

PART NUMBER MATRIX

4AN 00 X	X
SIZE	TYPE
9 - 2-1/2"	F - FLANGE X FLANGE
0 - 3"	MJF - MECHANICAL JOINT X FLANGE
A - 4"	MJ - MECHANICAL JOINT X MECHANICAL JOINT
C - 6"	
E - 8"	
G - 10"	
H - 12"	

* Flange x Flange only